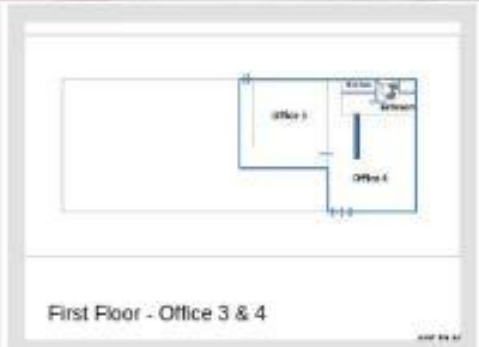


# FOR LEASE

1 Napier Terrace  
Broome WA 6725

**CHARTER**  
*Property Group*



## REBURNISHED OFFICES - "Now Available"

### Sensational Location

Located in the Heart of "Chinatown"  
Veranda Views of Roebuck Bay  
Walking distance to Shops, Cafe and Waterfront  
Would suit, Office or Retail

Unit 4 - Ground Floor - 42sqm  
Office 3 and 4 - First Floor - 64sqm

**John Borella**  
0418 610 891

[john@charterproperty.com.au](mailto:john@charterproperty.com.au)

**Chris Borella**  
0418 921 049

[chris@charterproperty.com.au](mailto:chris@charterproperty.com.au)

**Charter Property Pty Ltd (WA)**  
(08) 9321 2181  
[www.charterproperty.com.au](http://www.charterproperty.com.au)